

# NORTHFIELD PROFILE (BIRMINGHAM)

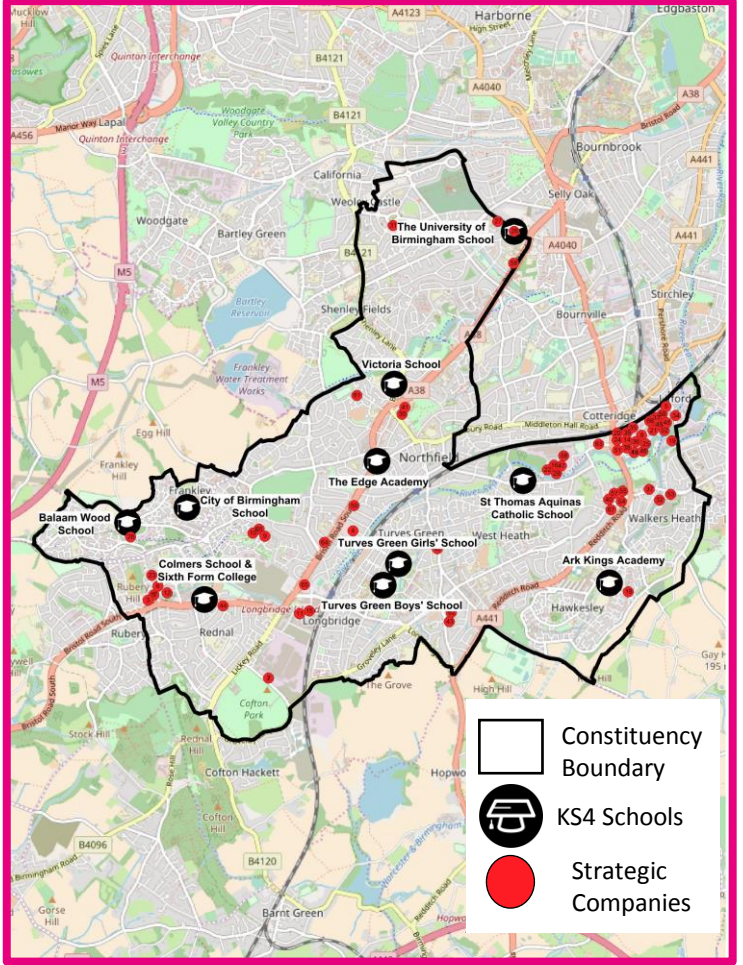
## DEMOGRAPHICS

Total Population: **103,457** residents  
 Working age population: **64,000** residents  
 Aged Under 16: **22,057** residents  
 Aged 65+: **15,355** residents

**Gender**  
 Male : **48,909 (48.2%)** residents  
 Female: **52,513 (51.8%)** residents

**Ethnicity**  
 White : **86%**  
 Mixed/Multiple Ethnic Groups: **5%**  
 Asian/Asian British: **4%**  
 Black/Black British: **4%**  
 Other: **1%**

**34 of the 65 neighbourhoods in Northfield in the bottom 20 of most deprived**



## KEY STAGE 4 DESTINATIONS

- Sustained education destinations (80%)
  - FE Colleges (53%)
  - Apprenticeships (7%)
  - State-funded sixth form (27%)
- Sustained employment/ destination (5%)

## EDUCATION

**Ark Kings Academy**  
Academy Sponsor-Led

**Balaam Wood School**  
Community School

**City of Birmingham School**  
Pupil Referral Unit

**Comlers School and Sixth Form College**  
Foundation School

**St Thomas Aquinas Catholic School**  
Academy Converter

**The Edge Academy**  
Alternative Free Schools

**The University of Birmingham School**  
Free Schools

**Turves Green Boys' School**  
Community School

**Turves Green Girls' School**  
Foundation School

**Victoria School**  
Community School

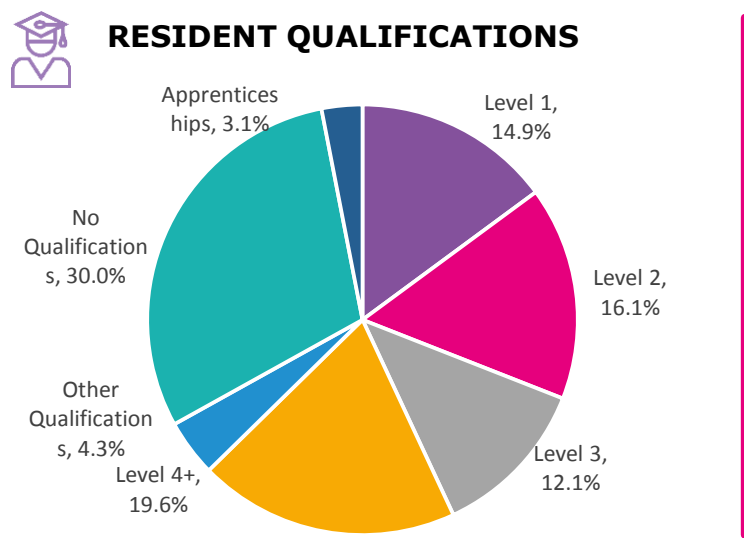
## EMPLOYMENT

Jobs: **38,900** (49%) of residents in employment

**Full-time employment**  
**27,944 (71.8%)**  
 UK Average: 71.8%

**Part-time employment**  
**10,956 (28.2%)**  
 UK Average: 28.2%

**Unemployed**  
**5,630 (7.1%)**  
 UK Average: 7.6%



**Data Sources:**  
 Demographics: Census 2011; GOV.UK:  
 IMD: English Indices of Multiple Deprivation 2013;  
 UKCES Skills Survey 2015 – Skills Lacking in 16 Year Olds;  
 GOV.UK: Destinations of Key Stage 4 and Key Stage 5 Pupils 2015;  
 Education: DfE 2016, Schools, Pupils and their Characteristics;  
 Resident Qualifications: Census 2011;  
 Employment: Census 2011

**BUSINESS – 67 STRATEGIC COMPANIES**

No	Company Name	Major Sector
1	R H Autoparts Limited	Retail
2	International Nepal Fellowship	Life Sciences & Healthcare
3	Al-Mahdi (As) Institute of Islamic Studies	N/A
4	Westhill Endowment	N/A
5	Broadening Choices For Older People	Life Sciences & Healthcare
6	Christian Education Movement	Business, Professional and Financial Services
7	Team Locum Limited	Business, Professional and Financial Services
8	Bell Plumbing Supplies Ltd	Retail
9	Data Power Limited	Construction (Building Technologies)
10	Imagery Direct Imaging Limited	Digital & Creative
11	Overwood Limited	Retail
12	CDI Group Limited	Digital & Creative
13	Kenfield Limited	Advanced Manufacturing & Engineering
14	Edward Thomas Interiors Limited	Construction (Building Technologies)
15	Central Mailing Services Limited	Logistics & Transport Technologies
16	Mechtech Automation Group Limited	Digital & Creative
17	Presentation Service Providers Limited	Business, Professional and Financial Services
18	W V Howe Limited	Retail
19	Paintbox Group Limited	Business, Professional and Financial Services
20	Aquapak Polymers Ltd	Advanced Manufacturing & Engineering
21	Systems ADI Group Limited	Business, Professional and Financial Services
22	Mill Garage Limited	Retail
23	A.W. Lashford & Son Limited	Retail
24	FAM Stumabo UK Limited	Retail
25	Hygiene Group Limited	Public Sector including Education
26	Allhands Limited	Construction (Building Technologies)
27	Flintvale Limited	Life Sciences & Healthcare
28	Biocare Limited	Advanced Manufacturing & Engineering
29	Thomas ROY Limited	Construction (Building Technologies)
30	MG	Advanced Manufacturing & Engineering
31	Nanjing Automobile Corporation (UK) Ltd	Business, Professional and Financial Services
32	Craven Woodcraft CO. Limited	Advanced Manufacturing & Engineering
33	D.P.J. Clothing Limited	Retail
34	Cotton Tails Nurseries Limited	Life Sciences & Healthcare
35	UCS Systems Limited	Business, Professional and Financial Services
36	Printing And Stationery Limited	Retail
37	Pfhi Limited	NA
38	Biotest (U.K.) Limited	Retail

No	Company Name	Major Sector
39	USN (UK) Limited	Business, Professional and Financial Services
40	South DOC Services Limited	Life Sciences & Healthcare
41	Birmingham Glass Services Limited	Construction (Building Technologies)
42	Elliott Nash Limited	Construction (Building Technologies)
43	Grespania (UK) Limited	Construction (Building Technologies)
44	NVC Lighting Limited	Advanced Manufacturing & Engineering
45	Reynaers Limited	Construction (Building Technologies)
46	Lark & Larks Ltd	Construction (Building Technologies)
47	New Fleet Services Ltd	Retail
48	Plumb Contracts Ltd	Construction (Building Technologies)
49	Right Price (Sibley) Limited	Retail
50	S Tomic Roofing Ltd	Construction (Building Technologies)
51	Appleton.Woods Limited	Retail
52	Frost Electroplating Limited	Advanced Manufacturing & Engineering
53	Mclcreate Limited	Business, Professional and Financial Services
54	Railtech (UK) Limited	Retail
55	Blocc Limited	Advanced Manufacturing & Engineering
56	Car Care Centre (Kings Norton) Ltd	Retail
57	Pert Air Conditioning Limited	Construction (Building Technologies)
58	Industrial Washing Machines Limited	Logistics & Transport Technologies
59	Extel Limited	Life Sciences & Healthcare
60	Strip Tinning Limited	Advanced Manufacturing & Engineering
61	Doosan Enpure Limited	Construction (Building Technologies)
62	Embrace Group Limited	Life Sciences & Healthcare
63	Foodbuy Europe Limited	Cultural Economy inc. Sports
64	Trascare Holdco Limited	Business, Professional and Financial Services
65	Vision Security Group Limited	Business, Professional & Financial Services
66	IDS Electrical Limited	Construction (Building Technologies)
67	Headway Birmingham & Solihull	Life Sciences & Healthcare